

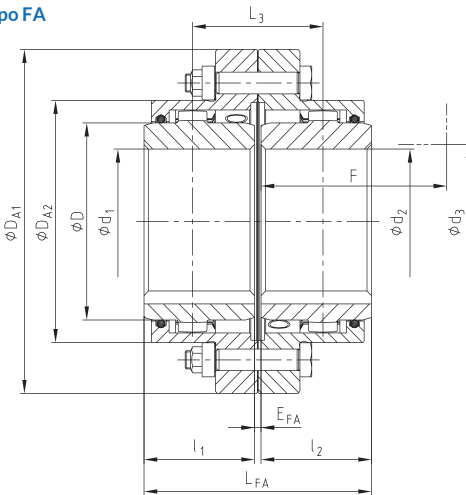
# GEARex® FA, FB y FAB

## Acoplamiento de engranaje

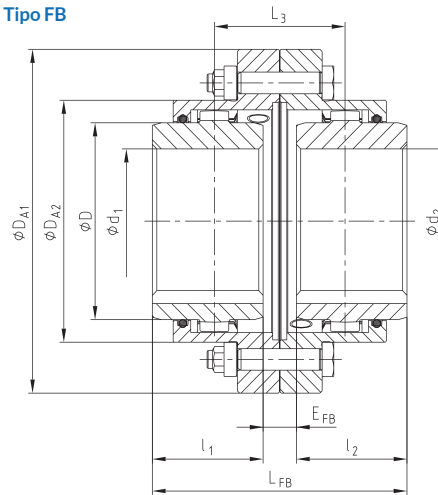
► Acoplamiento de acuerdo con AGMA 9008-B00, alta densidad de potencia



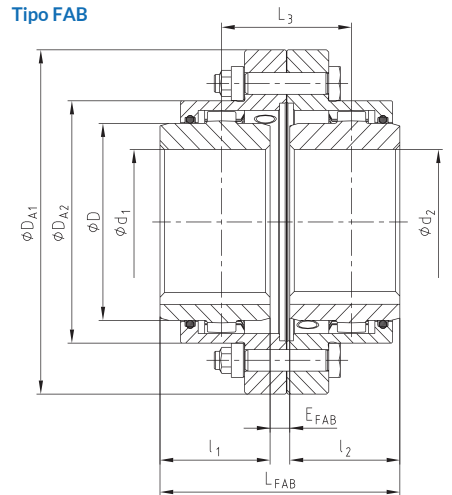
Tipo FA



Tipo FB



Tipo FAB



Dimensiones

| Tamaño | Diámetro piloto | Diámetro max. final<br>d1, d2 | Dimensiones [mm] |                          |     |     |      |     |     |      |     |     |       |       |     |     |      | Alimentación de grasa [dm <sup>3</sup> ] |
|--------|-----------------|-------------------------------|------------------|--------------------------|-----|-----|------|-----|-----|------|-----|-----|-------|-------|-----|-----|------|--|
|        |                 |                               | l1, l2           | Alargado max. eje l1, l2 | EFA | EFB | EFAB | LFA | LFB | LFAB | L3  | D   | DA1   | DA2   | F   | d3  |      |  |
| 10     | 26              | 50                            | 43               | 105                      | 3   | 21  | 12   | 89  | 107 | 98   | 55  | 67  | 111   | 83    | 74  | 52  | 0.02 |  |
| 15     | 26              | 64                            | 50               | 115                      | 3   | 15  | 9    | 103 | 115 | 109  | 59  | 87  | 152   | 106   | 84  | 68  | 0.04 |  |
| 20     | 31              | 80                            | 62               | 130                      | 3   | 31  | 17   | 127 | 155 | 141  | 79  | 108 | 178   | 129   | 104 | 85  | 0.08 |  |
| 25     | 38              | 98                            | 76               | 150                      | 5   | 29  | 17   | 157 | 181 | 169  | 93  | 130 | 213   | 157   | 123 | 110 | 0.12 |  |
| 30     | 44.5            | 112                           | 90               | 170                      | 5   | 33  | 19   | 185 | 213 | 199  | 109 | 153 | 240   | 181   | 148 | 130 | 0.18 |  |
| 35     | 46              | 133                           | 105              | 185                      | 6   | 40  | 23   | 216 | 250 | 233  | 128 | 180 | 280   | 213   | 172 | 150 | 0.22 |  |
| 40     | 52              | 158                           | 120              | 215                      | 6   | 42  | 24   | 246 | 282 | 264  | 144 | 214 | 318   | 249   | 192 | 175 | 0.35 |  |
| 45     | 80              | 172                           | 135              | 245                      | 8   | 50  | 29   | 278 | 320 | 299  | 164 | 233 | 347   | 273   | 216 | 190 | 0.45 |  |
| 50     | 80              | 192                           | 150              | 295                      | 8   | 56  | 32   | 308 | 356 | 332  | 182 | 260 | 390   | 308   | 241 | 220 | 0.70 |  |
| 55     | 90              | 210                           | 175              | 300                      | 8   | 70  | 39   | 358 | 420 | 389  | 214 | 283 | 425.5 | 333   | 275 | 250 | 0.90 |  |
| 60     | 100             | 232                           | 190              | 305                      | 8   | 84  | 46   | 388 | 464 | 426  | 236 | 312 | 457   | 364.5 | 316 | 265 | 1.15 |  |
| 70     | 100             | 276                           | 220              | 310                      | 10  | 76  | 43   | 450 | 516 | 483  | 263 | 371 | 527   | 424   | 360 | 300 | 1.50 |  |

Datos Técnicos

| Tamaño | Torque [Nm]     |                           | Velocidad max. [rpm]. | Peso con diámetro máx. [kg] |       |        |
|--------|-----------------|---------------------------|-----------------------|-----------------------------|-------|--------|
|        | T <sub>KN</sub> | T <sub>KN</sub> (42CrMo4) |                       | Manga                       | Eje   | Total  |
| 10     | 930             | 1580                      | 8500                  | 0.75                        | 0.55  | 2.73   |
| 15     | 2000            | 3300                      | 6400                  | 1.88                        | 1.12  | 6.38   |
| 20     | 3500            | 6300                      | 5400                  | 2.60                        | 2.09  | 9.94   |
| 25     | 6500            | 11000                     | 4500                  | 4.43                        | 3.56  | 16.83  |
| 30     | 10000           | 17400                     | 4000                  | 5.83                        | 6.18  | 25.21  |
| 35     | 17000           | 28800                     | 3500                  | 9.71                        | 9.87  | 41.25  |
| 40     | 28500           | 48500                     | 3100                  | 11.88                       | 16.07 | 58.14  |
| 45     | 37000           | 62000                     | 3000                  | 15.72                       | 21.42 | 77.08  |
| 50     | 51000           | 86000                     | 2500                  | 25.66                       | 29.59 | 114.40 |
| 55     | 65000           | 110000                    | 2300                  | 31.52                       | 40.30 | 150.41 |
| 60     | 85000           | 145000                    | 2100                  | 32.82                       | 52.96 | 177.44 |
| 70     | 135000          | 240000                    | 1850                  | 43.52                       | 85.77 | 268.20 |

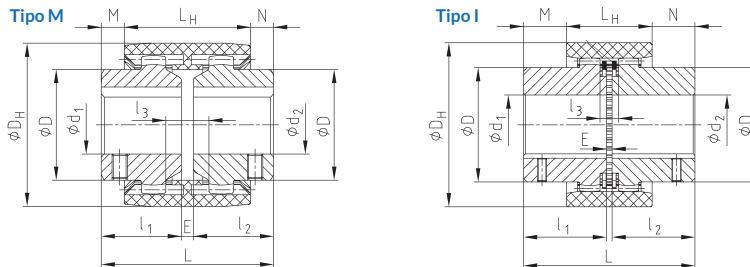
# BoWex® M, I

## Acoplamiento de engranaje

- ▶ Compacto y libre de mantenimiento



- ▶ Componentes

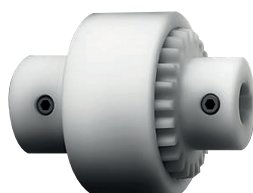


| BoWex® tipo M, tipo I |                 |                    |                 |                       |      |                                 |    |     |                |      |                |     |                |                          |                  |   |       |       |       |                             |        |        |   |  |  |
|-----------------------|-----------------|--------------------|-----------------|-----------------------|------|---------------------------------|----|-----|----------------|------|----------------|-----|----------------|--------------------------|------------------|---|-------|-------|-------|-----------------------------|--------|--------|---|--|--|
| Tamaño                | Torque [Nm]     |                    |                 | Diámetro final d1, d2 |      | Dimensiones [mm]                |    |     |                |      |                |     |                |                          |                  |   |       |       |       | Peso con diámetro máx. [kg] |        |        | Mass moment of inertia J with max. bore [kgcm²] |  |  |
|                       | T <sub>KN</sub> | T <sub>K max</sub> | T <sub>KW</sub> | Diámetro piloto       | Max. | l <sub>1</sub> , l <sub>2</sub> | E  | L   | L <sub>H</sub> | M, N | l <sub>3</sub> | D   | D <sub>H</sub> | Eje ØDz círculo de punta | Número de diente | Alargado máx. eje l <sub>1</sub> , l <sub>2</sub> | Manga | Eje   | Total | Manga                       | Eje    | Total  |   |  |  |
| M-14                  | 10              | 30                 | 5               | -                     | 15   | 23                              | 4  | 50  | 37             | 6.5  | 10             | 25  | 40             | 33                       | 20               | 40  | 0.03  | 0.07  | 0.1   | 0.08                        | 0.09   | 0.26   |   |  |  |
| M-19                  | 16              | 48                 | 8               | -                     | 20   | 25                              | 4  | 54  | 37             | 8.5  | 10             | 32  | 47             | 39                       | 24               | 40  | 0.03  | 0.1   | 0.23  | 0.15                        | 0.16   | 0.47   |   |  |  |
| M-24                  | 20              | 60                 | 10              | -                     | 24   | 26                              | 4  | 56  | 41             | 7.5  | 14             | 36  | 53             | 45                       | 28               | 50  | 0.04  | 0.14  | 0.32  | 0.21                        | 0.36   | 0.93   |   |  |  |
| M-28                  | 45              | 135                | 23              | -                     | 28   | 40                              | 4  | 84  | 46             | 19   | 13             | 44  | 65             | 54                       | 34               | 55  | 0.08  | 0.33  | 0.74  | 0.65                        | 1.22   | 3.09   |   |  |  |
| M-32                  | 60              | 180                | 30              | -                     | 32   | 40                              | 4  | 84  | 48             | 18   | 13             | 50  | 75             | 63                       | 40               | 55  | 0.09  | 0.43  | 0.95  | 1.14                        | 2.17   | 5.48   |   |  |  |
| M-38                  | 80              | 240                | 40              | -                     | 38   | 40                              | 4  | 84  | 48             | 18   | 13             | 58  | 83             | 69                       | 44               | 60  | 0.13  | 0.55  | 1.23  | 1.58                        | 3.55   | 8.68   |   |  |  |
| M-42                  | 100             | 300                | 50              | -                     | 42   | 42                              | 4  | 88  | 50             | 19   | 13             | 65  | 92             | 78                       | 50               | 60  | 0.14  | 0.68  | 1.5   | 2.32                        | 5.98   | 14.28  |   |  |  |
| M-48                  | 140             | 420                | 70              | -                     | 48   | 50                              | 4  | 104 | 50             | 27   | 13             | 68  | 95             | 78                       | 50               | 60  | 0.23  | 0.79  | 1.81  | 3.9                         | 7.22   | 18.34  |   |  |  |
| M-65                  | 380             | 1140               | 190             | 21                    | 65   | 55                              | 4  | 114 | 68             | 23   | 16             | 96  | 132            | 110                      | 42               | 70  | 0.55  | 1.9   | 4.35  | 21.2                        | 31.8   | 84.8   |   |  |  |
| I-80                  | 700             | 2100               | 350             | 31                    | 85   | 90                              | 6  | 186 | 93             | 46.5 | 20             | 124 | 178            | 145                      | 46               | -   | 1.13  | 5.2   | 11.53 | 68.9                        | 150.8  | 370.5  |   |  |  |
| I-100                 | 1200            | 3600               | 600             | 38                    | 100  | 110                             | 8  | 228 | 102            | 63   | 22             | 152 | 210            | 176                      | 48               | -   | 1.78  | 9.37  | 20.52 | 158.6                       | 401.3  | 961.2  |   |  |  |
| I-125                 | 2500            | 7500               | 1250            | 45                    | 125  | 140                             | 10 | 290 | 134            | 78   | 30             | 192 | 270            | 225                      | 54               | -   | 3.88  | 19.44 | 42.76 | 562.9                       | 1362.3 | 3287.5 |   |  |  |

# BoWex® M, I

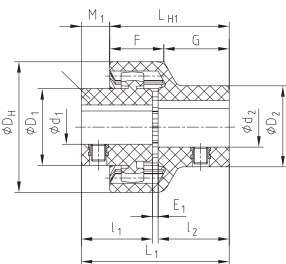
## Acoplamiento de engranaje

- ▶ Plug-in coupling made of nylon (two-part and three-part)

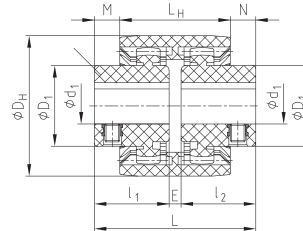


- ▶ Componentes

Tipo de acoplador enchufable junior (dos partes)



Tipo de acoplador junior M (tres partes)



| BoWex® junior plug-in coupling (two-part) and BoWex® junior M (three-part) |                 |                    |                   |    |                              |    |                  |                                 |                |                |                 |                |      |      |   |    |                |      |      |       |                      |            |
|--|-----------------|--------------------|-------------------|----|------------------------------|----|------------------|---------------------------------|----------------|----------------|-----------------|----------------|------|------|---|----|----------------|------|------|-------|----------------------|------------|
| Tamaño   | Torque [Nm]     |                    | Diámetro final    |    |                              |    | Dimensiones [mm] |                                 |                |                |                 |                |      |      |   |    |                |      |      |       | Velocidad max. [rpm] | *Peso (kg) |
|  | T <sub>KN</sub> | T <sub>K max</sub> | Eje Componente 1b |    | Plug-in sleeve Componente 2b |    | D <sub>H</sub>   | l <sub>1</sub> , l <sub>2</sub> | E <sub>1</sub> | L <sub>1</sub> | L <sub>H1</sub> | M <sub>1</sub> | F    | G    | E | L  | L <sub>H</sub> | M, N |      |       |                      |            |
| 14<br>M-14   | 5               | 10                 | Ø6, Ø7,           | 22 | Ø8                           | 22 | 40               | 23                              | 2              | 48             | 40              | 8              | 18.5 | 21.5 | 4 | 50 | 37             | 6.5  | 6000 | 0.059 |                      |            |
|  |                 |                    | Ø8, Ø9            |    | Ø10, Ø11                     |    |                  |                                 |                |                |                 |                |      |      |   |    |                |      |      |       | Ø12, Ø14             | Ø12, Ø14   |
|  |                 |                    | Ø12, Ø14          |    | Ø12, Ø14                     |    |                  |                                 |                |                |                 |                |      |      |   |    |                |      |      |       | Ø12, Ø14             | Ø12, Ø14   |
| 19<br>M-19   | 8               | 16                 | Ø10, Ø11,         | 26 | Ø14, Ø16                     | 32 | 47               | 25                              | 2              | 52             | 42              | 10             | 19.0 | 23.0 | 4 | 54 | 37             | 8.5  | 6000 | 0.033 |                      |            |
|  |                 |                    | Ø12, Ø14          |    | Ø14, Ø15                     |    |                  |                                 |                |                |                 |                |      |      |   |    |                |      |      |       | Ø19                  | Ø19        |
|  |                 |                    | Ø16               |    | Ø19                          |    |                  |                                 |                |                |                 |                |      |      |   |    |                |      |      |       | Ø19                  | Ø19        |
| 24<br>M-24   | 12              | 24                 | Ø10, Ø11,         | 26 | Ø14, Ø16                     | 32 | 53               | 26                              | 2              | 54             | 45              | 9              | 21.5 | 23.5 | 4 | 56 | 41             | 7.5  | 6000 | 0.068 |                      |            |
|  |                 |                    | Ø12, Ø14          |    | Ø14, Ø15,                    |    |                  |                                 |                |                |                 |                |      |      |   |    |                |      |      |       | Ø16                  | Ø19, Ø20   |
|  |                 |                    | Ø18, Ø19,         |    | Ø20                          |    |                  |                                 |                |                |                 |                |      |      |   |    |                |      |      |       | Ø24                  | Ø24        |

\*Peso con agujero intermedio por cada tamaño del BoWex® junior plug-in coupling (two-part) and BoWex® junior M (three-part)

Calle René Descartes N° 349 Ate - Lima

atencionalcliente@gruposhanoc.com / 207-1300 anx 109 / 937411489

servicios@gruposhanoc.com / 207-1300 anx 131 / 956033459

